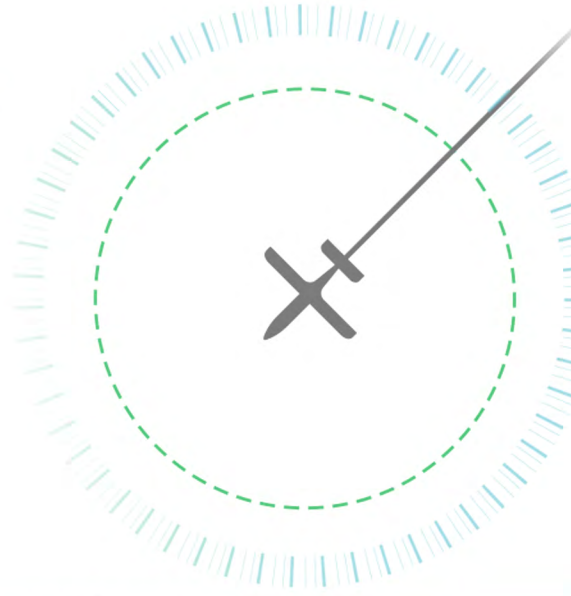


120.300  
Seattle Ctr

126.500  
Seattle App



330 TR



# Product Catalog

- General Aviation
- Business Aviation
- Helicopters
- Fleet Operators

# LEADING THE AVIATION INDUSTRY IN TECHNOLOGY & INNOVATION.

Avionics is what we do. It's ALL we do. We're a team of pilots and aviation enthusiasts who solve real-world flying problems. Everything we do is with your safety top-of-mind and from your point of view.

When it comes to developing avionics, our primary goal is to ensure that you can find what you need fast allowing you keep your head up and focused on the sky.

# TABLE OF CONTENTS

Who We Are .....	3-4
Avidyne Firsts .....	3-4
General Aviation .....	5
Business Aviation .....	6
Helicopters .....	7
Fleet.....	8
Dzus-mount FMS .....	9-10
GPS/NAV/COM .....	11-12
ADS-B Transponders.....	13
ADS-B Receivers .....	14
Traffic Systems with ADS-B.....	15
All-in-One ADS-B.....	16
Autopilot .....	17
Audio Panel.....	18
Tablet Apps.....	19-20
Pilot Club/Customer Support .....	21
What Our Pilots Are Saying.....	22

# WHO WE ARE

---

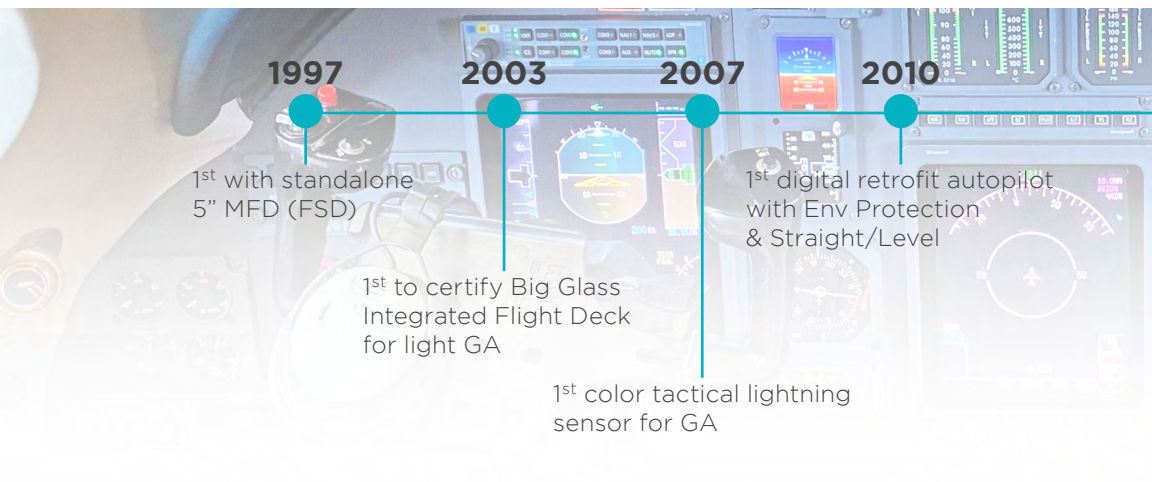
At Avidyne, everything we design is with a pilot-centric point of view. We have many experienced pilots in our design and engineering teams, many of whom have logged thousands of hours in civilian and military aircraft. When it comes to developing avionics, our primary goal is to ensure that you can find what you need fast, letting you keep your head up and in the game.

For more than two decades, Avidyne Corporation has been a market-leader in the design and manufacturing of integrated avionics systems for general, business and military aviation aircraft. All Avidyne products are manufactured at our headquarters in Melbourne, Florida. We have additional design facilities in Concord, Massachusetts and Westerville, Ohio including the newly built Aircraft Integration and Flight Test Center located at the Orlando-Melbourne International Airport.

## A HISTORY OF FIRSTS

---

Avidyne has been the technology leader in general avionics for over 25 years and since our inception we've been at the forefront of innovation. And along the way, we have racked up a number of industry firsts.





“As a pilot and aircraft owner, I was struck by how little GA cockpits had changed over the last 30 years, I saw huge potential to develop a core technology and define a new generation of avionics that improve flying safety.”

— Dan Schwinn  
President & CEO

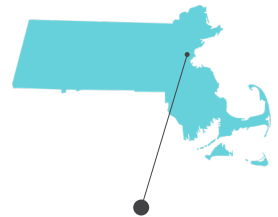
## LOCATIONS



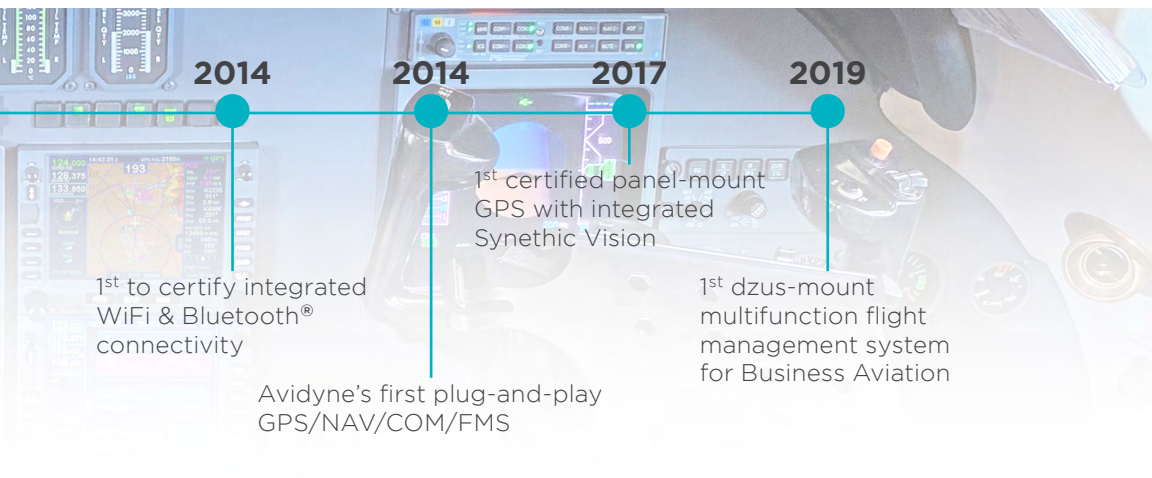
Westerville, OH



Melbourne, FL  
HQ & Manufacturing



Concord, MA



# GENERAL AVIATION

Improving safety and awareness.

For more than 25 years, Avidyne's primary focus has been, and always will be, the development and delivery of premium avionics for the general aviation community.

It all started with a single idea; that there has to be a better, safer way to fly single-pilot IFR. Made by pilots for pilots, our avionics are designed for workload reduction and simplicity of operation for the single pilot.



Cirrus - Dual Entegras, AMX240, IFD550, IFD440 & DFC90



# BUSINESS AVIATION

Increased functionality, lower operating costs.



Citation 560XL - Dual IFD550

Avidyne's FMS/LPV/ADS-B system provides a better, more affordable way to navigate the skies. Avidyne's IFD Series is a full-featured FMS in an easy-to-use, yet powerful design. Each IFD provides SBAS/LPV precision navigation designed to meet accuracy and integrity requirements for ADS-B as part of the NextGen airspace initiative. Avidyne's full line of avionics for business jets are engineered for simplicity with the latest in pilot-centric technology including knobs and buttons to augment touchscreen operation in times of turbulence and inclement weather.

# HELICOPTERS

Designed for the the way you fly.



Robinson R66 - IFD540 & AXP340

Avidyne's IFD Series GPS Navigators for helicopters were designed with real world flying conditions in mind. This means every detail and function of our IFD Series is engineered with purpose: to make flying, whether it be fixed wing or rotorcraft, simpler and safer. That's why we included knobs and buttons. In times of turbulence, instability, or inclement weather, Avidyne's IFD Hybrid Touch user interface gives pilots the choice based on phase of flight and pilot preference.



# FLEET

Keep your fleet up and running.

Fleet operators know that uptime is the only thing that matters. A grounded aircraft costs money and degrades service levels. Fortunately, Avidyne is designed to keep your fleet not just up and running, but operating with the technology and features that will last you for years to come. Uptime means being able to rely on an easy swap out of your old GNS units and no cutting into your panels. With the IFD Series and SkyTrax 600 TAS systems for your entire fleet, you'll be sure to minimize downtime and maximize profits.



Cessna 206 - IFD550, IFD440, AMX240, AXP340 & IFD100 on iPad

# DZUS-MOUNT MULTIFUNCTION FMS

Setting a new standard in flight management systems.

Avidyne Atlas™ and Avidyne Helios™ are new multifunction SBAS flight management systems that sets a new standard for in navigation systems for turbine class fixed wing aircraft and rotorcraft respectively. Avidyne Atlas and Helios FMS units provide full Required Navigation Performance (RNP) and Area Navigation (RNAV) capability, including Localizer Performance with Vertical (LPV), Lateral Navigation/Vertical Navigation (LNAV/VNAV), LNAV-Only, and Approach Procedures with Vertical (APV) approach modes.

## FMS Features



Hybrid touchscreen with traditional knobs and buttons



Traffic display from TCAS, TAS, or ADS-B



Moving map with extensive airspace, terrain, navaid, and airport display capability



Integrated WiFi and Bluetooth®



Display of XM or ADS-B weather with full graphics as an overlay on the map



Integration with ForeFlight® and a host of other EFBS

## Available options

Options such as Avidyne GPS Legacy Avionics Support (GLAS) provides a direct interface to legacy Collins Proline 21 and Honeywell Primus EFIS systems for vertical guidance during approach operations.

WX Radar that supports Vertical Profile™, and can replace legacy radar indicators or act as a repeater display with certain EFIS systems for added redundancy.

Option for RS-170 video input and display.



**Avidyne Atlas™**



## Avidyne Atlas™

Flight planning made easy for turbine class fixed wing aircraft

- Display of Jeppesen® approach plates and airport diagrams with aircraft position shown on the charts
- Avidyne GLAS™ technology
- One-touch victor airway and jet-route navigation



**Avidyne Helios™**



## Avidyne Helios™

Designed specifically for corporate, military and special mission helicopters

- Full airway flight planning plus helicopter SIDS/STARS & helipads
- NVIS capability
- Optional H-TAWS

# THE IFD SERIES

The most intuitive FMS/GPS/NAV/COM in the sky

As the heart of your ADS-B system, Avidyne's IFD Series FMS/GPS/NAV/COM represent the next generation in flight management systems. Each provides SBAS/LPV precision navigation and is designed to meet the accuracy and integrity requirements for ADS-B as part of the NextGen airspace initiative as well as international airspace. As direct replacements for legacy systems, the IFDs each share the same basic functionality in large and compact display formats respectively.

## IFD Series Features



Touchscreen GPS/NAV/COM with Knobs and Buttons



ADS-B Compliant Position Source



Synthetic Vision with Integrated Traffic



Built-in Bluetooth® and WiFi



3D Terrain Awareness and FLTA



IFD100 App for iPad



LPV Vertical Guidance Coupled Approaches



Direct Slide-in Replacements of old GNS Systems



Low Fuel Alerting with compatible Fuel Totalizer System



Wireless Interface to Third-Party Flight Planning and Mapping Applications such as Foreflight®



IFD550



IFD545

## Navigation at your fingertips

Get where you need to go. That's why we fly. Avidyne wants you to keep your head up when flying with your family and loved ones. That's the reason Avidyne designed their FMS to be as user-friendly as possible. Go where you need to go in two clicks or less.

## Made for each other.

The IFD Navigators are key components in Avidyne's panel-mounted avionics suite, which also includes the AMX240 Audio Panel, AXP340 ADS-B Mode S Transponder, and DFC90 Digital Autopilot.

## The IFD Series Feature Comparison

	IFD 550	IFD 545	IFD 540	IFD 510	IFD 440	IFD 410
FMS/GPS	•	•	•	•	•	•
VHF NAV	•		•		•	
VHF COM	•		•		•	
3D SVS	•	•	•	•	•	•
ARS + DYNAMIC SVS	•	•				
WiFi/BT/FLTA	•	•	•	•	•	•
Radar	Opt	Opt	Opt	Opt	From 5-series	From 5-series
Video	Opt	Opt	Opt	Opt	N/A	N/A



IFD540/510\*



IFD440/410\*



## AXP340: PANEL MOUNT

As part of our SkyTrax ADS-B line, the ADS-B Out AXP340 is a panel-mounted Class 1 Mode S Level 2 Datalink Transponder, with support for 1090MHz Extended Squitter (ES), that meets all the current requirements for Mode S elementary surveillance transponders for both IFR and VFR flight.



As a slide-in replacement for existing KT76A/KT78A transponders, the AXP340 is designed to easily upgrade existing Mode A/C equipment to Mode S, while adding additional functionality like a Direct-entry Numeric Keypad, Pressure Altitude & GPS Lat/Lon readout, Flight ID entry, one-touch VFR code entry, an easy-to-use Stop Watch Timer, Flight Timer, and Altitude Alerter.

## AXP322: REMOTE MOUNT

The ADS-B Out AXP322 transponder is a remote-mounted Class 1 Mode S Level 2 Datalink Transponder, with support for 1090MHz Extended Squitter (ES), that meets all the current requirements for Mode S elementary surveillance transponders for both



It is designed to be controlled with Avidyne's IFD Series GPS/NAV/COM systems. It transmits the required ADS-B Out signals including your aircraft's GPS-derived position via 1090MHz, along with ground track, ground speed and altitude information.

# SKYTRAX200

## 978MHz ADS-B In solution

Using the 978MHz datalink frequency band, which is one of two channels available to pilots in the United States airspace for ADS-B In, Avidyne's SkyTrax200 ADS-B In Receiver provides Flight Information System-Broadcast (FIS-B) weather information, including NEXRAD radar, METARs, TAFs, AIRMETs, SIGMETs, Special Use Airspace (SUA), and Temporary Flight Restrictions (TFRs).



The SkyTrax200 will also receive traffic information directly from nearby 978MHz-equipped aircraft, and indirectly through the rebroadcast of 1090MHz-equipped aircraft via 978MHz ADS-R. Traffic information from aircraft not participating in ADS-B is received from ground stations via 978MHz TIS-B transmissions (Traffic Information Service-Broadcast).



Receives ADS-B/R Traffic



Receives ADS-B Weather



Display Port For ADS-B Traffic



2 Display Ports For ADS-B Weather

# SKYTRAX600 SERIES

## Active Traffic with ADS-B.

Traffic Advisory Systems (TAS), which are based on the technology originally developed for air-transport category traffic alert and collision avoidance systems (TCAS), have been available for general aviation aircraft for several years, but have been cost-prohibitive for many owner-flown aircraft. Until now.



With the new dual-antenna SkyTrax600 Series, Avidyne offers three different TAS-A systems (SkyTrax605, SkyTrax615 and SkyTrax620), tailored for the type of aircraft you fly. These feature-rich, value-priced SkyTrax systems are fully TSO certified, surpassing the performance capabilities of many higher-cost traffic systems and setting a new standard for active-surveillance traffic capability and affordability.

Avidyne's SkyTrax600 Systems detect other aircraft sooner and more accurately, so you avoid surprises due to the shadowing effects inherent with single-antenna systems. Using top and bottom directional antennas, SkyTrax600 systems actively interrogate other aircraft with or without 1090MHz ADS-B IN and provide hybridized, timely audible and visual alerts with the precise location of conflicting traffic. The SkyTrax600 Series provides full-time protection and higher performance. Because when it comes to safety, you want to see the whole picture.



Dual Antennas provide optimal signal coverage



Actively interrogates nearby transponders



Optimal situational awareness and safety



6 Display ports for ADS-B traffic

# NGT-9000

## Multi-link Surveillance System



The Lynx NGT-9000 is a fully-compliant panel-mounted ADS-B Mode S Transponder with dual-band ADS-B IN capability. The Lynx NGT-9000 features a full touch screen display of subscription-free weather data, including METARs, AIRMETs, SIGMETs, and NEXRAD graphical displays overlaid on a moving map. Lynx's Traffic and Weather can also be displayed on the Avidyne IFD Series.

The NGT-9000+ offers the same great features plus a full-function integrated active Traffic Advisory System, which provides complete traffic protection even when outside of radar coverage area or in airspace where ADS-B is not currently offered.

The NGT-9000R is a remote-mounted version which is ideal for aircraft where panel space is at a premium. Traffic and Weather can be displayed on the Avidyne IFD Series.

- Provides flight ID, aircraft type & ground speed of ADS-B traffic
- Intuitive full-color, touchscreen interface
- Full-color moving maps including TFRs, airports and NOTAMs
- Full-color graphical and textual weather displays
- Interface & display for WX-500 Stormscope®
- Optional ADS-B Traffic Advisory System (ATAS)
- NextGen Active Traffic option removes the need for a separate box
- Optional antenna diversity allows for a second antenna

\*Must be purchased with an IFD

# DFC90

## Precision of flight and improved safety.

Avidyne's DFC90 Attitude-Based Digital Autopilot enhances precision of flight and improves safety for Entegra-equipped Cirrus. The DFC90 adds the precision of an attitude-based flight control system and Avidyne's innovative, safety-enhancing Envelope Protection (EP®) capability and Envelope Alerting (EA®).

The DFC90 has all the standard vertical and lateral modes of operation of a turbine-class autopilot system, including:

Enhanced Flight Director (FD), Altitude Hold (ALT), Airspeed Hold (IAS), Vertical Speed Hold (VS), Heading (HDG), and Navigation (NAV, APPR, LOC/GS, GPSS)



The STRAIGHT & LEVEL button recovers the aircraft from unusual attitudes. Overrides all autopilot modes and levels the aircraft in both pitch and roll from a wide range of capture attitudes for an added measure of safety.

Customers upgrading from the S-TEC 55X servos will notice several major performance and feature improvements.

The DFC90 is also available for select C182 and Bonanza models that are currently equipped with legacy STEC autopilot using the Aspen EFD1000.



# AMX240

The latest in audio management.

The AMX240 is a full-featured audio source selector panel, intercom, and marker beacon receiver that provides outstanding features and sound quality, while incorporating large, easy-to-read, LED backlit buttons provide simple mode selection and at-a-glance annunciation of your current audio and intercom configuration.



Supporting three transmitter inputs, nine receiver inputs, plus two inputs for stereo music and five unswitched inputs, the AMX240 also features a six-place high-fidelity stereo intercom, public address (PA) function, plus Bluetooth® music and full-duplex cell phone interfaces. The AMX240 also includes dedicated COM1 and COM2 "Monitor" selection buttons to take advantage of the Avidyne IFD's ability tune the Standby frequency while also transmitting and receiving on the active frequency.



Six-place HiFi stereo intercom



Slide-in replacement of GMA340



PA function



Dedicated replay button



Bluetooth® music



Cell phone interfaces

# IFD100 APP FOR iPad®

Get big glass with added functionality

Avidyne's IFD-Series are the only FMS/GPS Navigators in aviation offering both built-in Bluetooth® and WiFi. With that, all IFDs offer a WiFi connection to Apple iPads with the Avidyne IFD100 iPad app. This app acts as an additional instance of an IFD, where you can edit your flight plan, monitor your map for ADS-B weather & traffic, and independently view pages. Even if you have the smaller-glass IFD400-Series, your IFD100 display will provide Big Glass capabilities at a fraction of the cost.

Portrait Mode



Landscape Mode



## Navigation at your fingertips

Avidyne's IFD-Series are the only FMS/GPS Navigators in aviation offering both built-in Bluetooth® and WiFi. With that, all IFDs offer a WiFi connection to Apple iPads with the Avidyne IFD100 iPad app. This app does not just mirror the functions of the IFD, but acts as an additional instance of an IFD, where you can edit your flight plan, monitor your map for ADS-B weather & traffic (with the Avidyne SkyTrax ADS-B In solutions), and view pages independently. Even if you have the smaller-glass IFD4-Series, your IFD100 display will provide Big Glass capabilities at a fraction of the cost.

# IFD TRAINER APP FOR iPad®

Fly it. Learn it. Love it.



Learn what makes the IFD GPS/NAV/COM one of the most intuitive, feature-rich flight management systems in the sky, for FREE. Get hands on experience with the IFD, become familiar with the Page & Tab interface, touchscreen with knobs and buttons, get special tips and tricks, training videos and more! Download the IFD Trainer for iPad for FREE today from the Apple Store!

## Trainer App Features

- Configurable as an IFD550, IFD545, IFD540, IFD510, or IFD440.
- Jeppesen Procedural Charts and airport diagrams.
- Database updates using your Jeppesen account.
- Quick access to training videos and pilot guides.
- Comes loaded with demo databases.



# CUSTOMER SUPPORT

---

Our customer and technical support teams are here to ensure your experience with Avidyne is best in class. The customer and technical support teams are available to answer any question you may have regarding the operation, installation and latest updates for your Avidyne equipment. To best serve our pilots, we have created a number of helpful resources that will allow you access to the latest information, documentation, tips and tricks, and more.



## Knowledge Base

Everything from warranty to software updates, how to set up your IFD100 app, training information and more.



## Training

Expert training for people who want to know all the features of their new equipment.



## Product Documentation

All installation, technical and service information for Avidyne's full product line.

# AVIDYNE PILOT CLUB

---

We appreciate our Avidyne pilots. We wouldn't be here if it weren't for you! That's why we created the Avidyne Pilot Club. The Avidyne Pilot Club is an elite group of pilots who share more in common than just the joy of flying; they love their Avidyne equipment. As a Pilot Club member, you gain exclusive access to insider news, Avidyne gear, merchandise, and special benefits. What's more, if you tell a pilot friend about Avidyne and it results in a purchase, you could be eligible for special offers, discounts and possible upgrades. Join today!

On Facebook? Join the Avidyne Pilot Club Group for the latest news, updates and promotions! [facebook.com/groups/AvidynePilotClub](https://www.facebook.com/groups/AvidynePilotClub)

\* Closed group. Must have Avidyne product to participate. \*

# WHAT OUR PILOTS ARE SAYING

---



## Baron Pilot

---

When I purchased the Baron, I knew I was going to add a GPS to the stack. While doing my research, I downloaded Avidyne's simulator and instantly fell in love with the IFD's logic. Put simply, the IFD is more of an FMS logic while the competition is a traditional GPS. [www.youtube.com/baronpilot](http://www.youtube.com/baronpilot)



## Martin Pauly

---

It's impossible to not love the Avidyne IFDs. After replacing my older 530/430 with the new IFDs, the improvements jump out on every flight. My personal favorites: the complete navigation and guidance capabilities of a real flight management system and the ease of nav database updates without special hardware and tools. [www.youtube.com/martinpauly](http://www.youtube.com/martinpauly)



## 310 Pilot

---

Recently, we decided to upgrade our old GNS system. We visited with multiple manufacturers producing replacements. It was a unanimous decision, we decided to upgrade to a full Avidyne avionics suite. I've had the pleasure of flying with the full suite and I'm absolutely loving our decision to upgrade with Avidyne more and more. [www.youtube.com/310pilot](http://www.youtube.com/310pilot)



## Bill Elliot, Legendary NASCAR Driver

---

Going fast is my business. I don't have a lot of time to spend entering flight plans. Their FMS makes it fast and easy. The install process is seamless with very little downtime. It's one of the many reasons I chose to go with Avidyne.

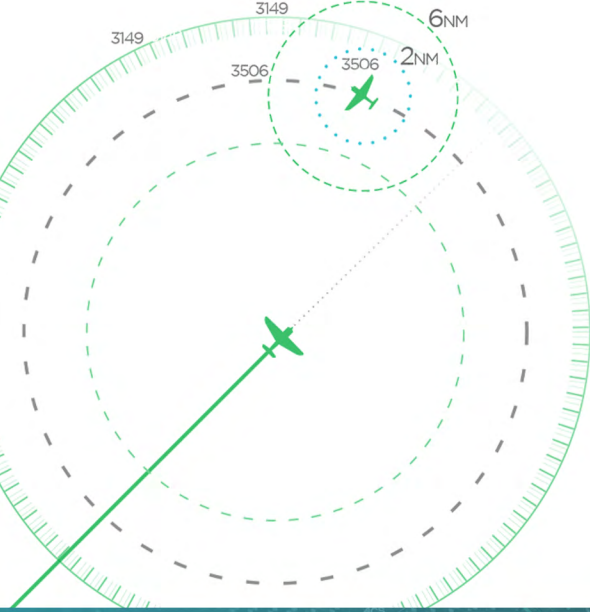


## Charlie Precourt, NASA Astronaut/Shuttle Commander

---

I have found the combination of total capabilities and lower cost make it a great solution. Being able to do my preflight at the office, file a flight plan on Foreflight® and then load all the data to the IFD FMS via WiFi is a huge feature for me. Saves lots of time on the ground and ensures accuracy of input.

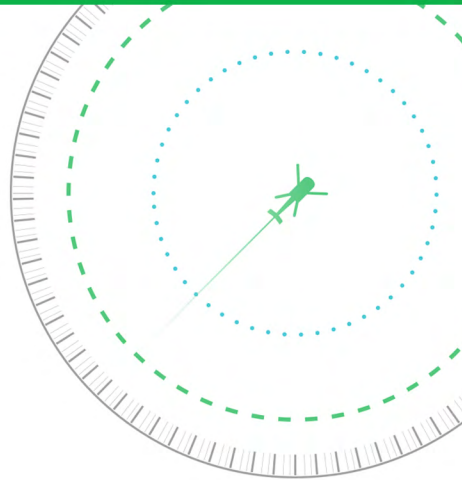




Avidyne Corporation  
710 Noth Drive  
Melbourne, FL 32934 USA

800.AVIDYNE  
sales@avidyne.com

[avidyne.com](http://avidyne.com)



Copyright©2020 All Rights Reserved